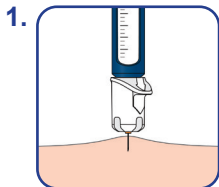
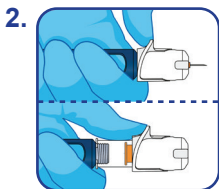




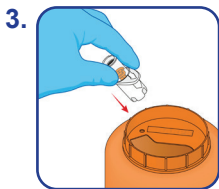
How to Use



Remove the protective seal.
Screw needle onto injection pen
and inject as per pen instructions.



Push needle cover over needle
until it clicks and orange indicator
is visible.



Unscrew needle and dispose of in
sharps container.

UNIFINESAFECONTROLIFU/OMI/1019/1/US

Wash hands thoroughly and/or change personal protective equipment before and after using the device in accordance with your institution's guidelines.